



KEEP PENNSYLVANIA BEAUTIFUL AFFILIATE

Countywide Municipal Assessment Survey Results

June 2, 2025

Introduction

Keep Chester County Beautiful (KCCB) administered this Countywide Municipal Assessment Survey between February and May 2025. The purpose of the survey was to better understand how communities in Chester County manage their litter and beautification efforts. This survey is part of a larger countywide assessment to identify common challenges, where current gaps might exist in programming and resources, and opportunities for improvement.

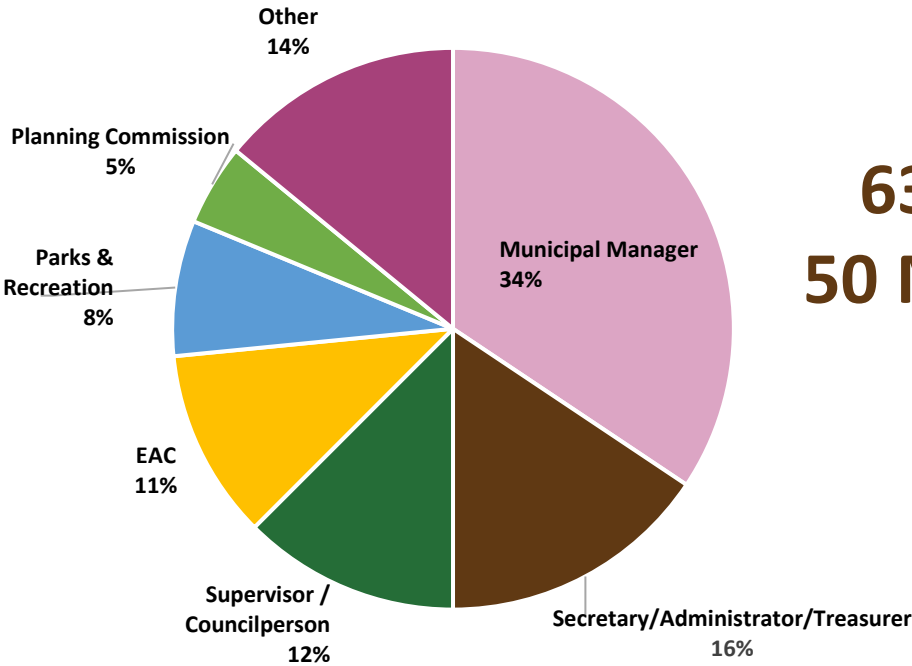
The survey was sent to all municipal managers and secretaries, requesting that they distribute it to their staff or EACs for completion. It included sixteen questions divided into three sections: 1) Existing Resources, Infrastructure, and Enforcement; 2) Existing Conditions and Issues; and 3) Needs and Opportunities. We received sixty-three responses representing fifty municipalities throughout the County.

The results and key findings may be used to:

- Identify who is organizing cleanups, the resources they possess, and any additional support that may be needed.
- Inform litter prevention/cleanup, waste reduction, illegal dumping, and beautification/greening initiatives.
- Develop tools and strategies to address problem areas, share resources, and strengthen volunteer efforts countywide.
- Help identify projects for potential grant applications.
- Help collaboration between KCCB, neighboring municipalities and community groups.

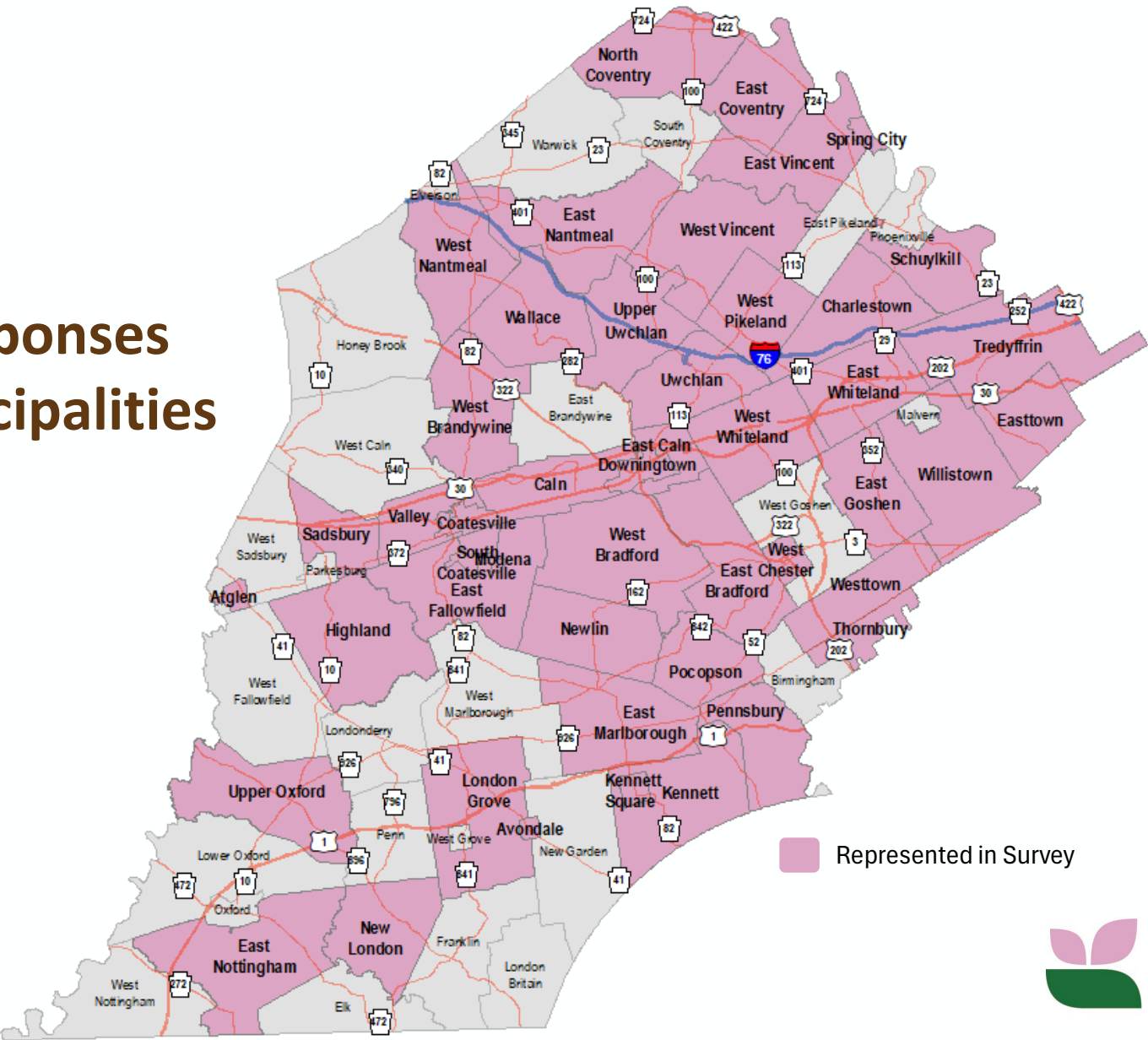
The following summarizes the results of the survey.

MUNICIPAL ASSESSMENT - SURVEY RESULTS



Survey Respondents

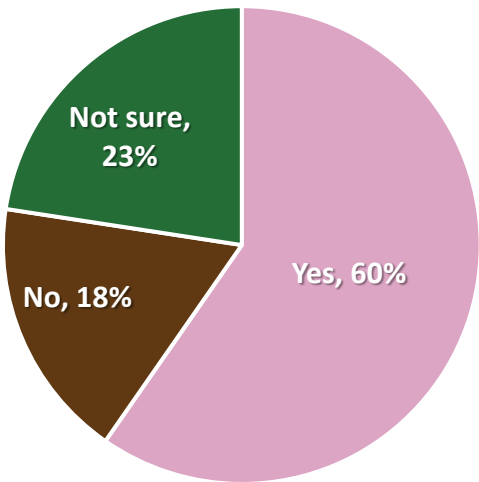
63 Responses
50 Municipalities



MUNICIPAL ASSESSMENT - SURVEY RESULTS

Q4

Does your municipality have litter management, clean-up, prevention, or enforcement policies in place?



60% of respondents stated they have at least one of the following litter management or enforcement policy:

Ordinances

- Litter, property maintenance, nuisance, and dog waste
- Waste hauler requirements (enclosed trucks)
- Plastic Bag Ban

Community Engagement

- EAC, civic group, or volunteer clean-ups
- Adopt-a-Highway
- Conservancy partnerships

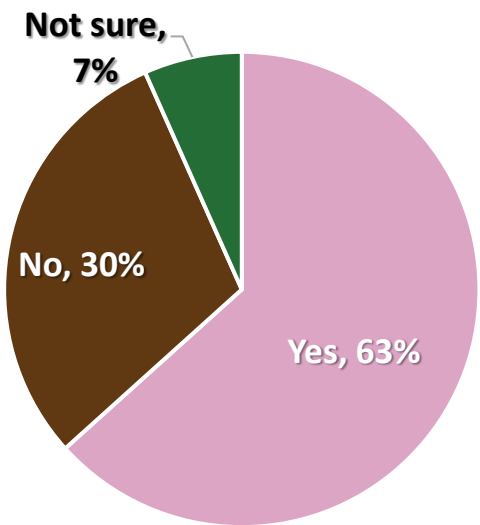
Operational

- Road crews pick up litter
- Trash contracts include litter control
- Enforcement by code officers and occasionally police

Answered: 62

Q5

Does your municipality have a committee, group, or staff position with litter clean-up, prevention, or enforcement responsibilities?



Many municipalities have an Environmental Advisory Council (EAC), Parks and Recreation, or Public Works with litter clean-up, prevention, or enforcement responsibility.

- 19 EAC
- 14 Parks and Recreation
- 12 Public Works
- 2 Sustainability Committee
- 5 Code official or police enforcement
- 7 have an EAC, Parks and recreation, and public works that have various litter management responsibilities

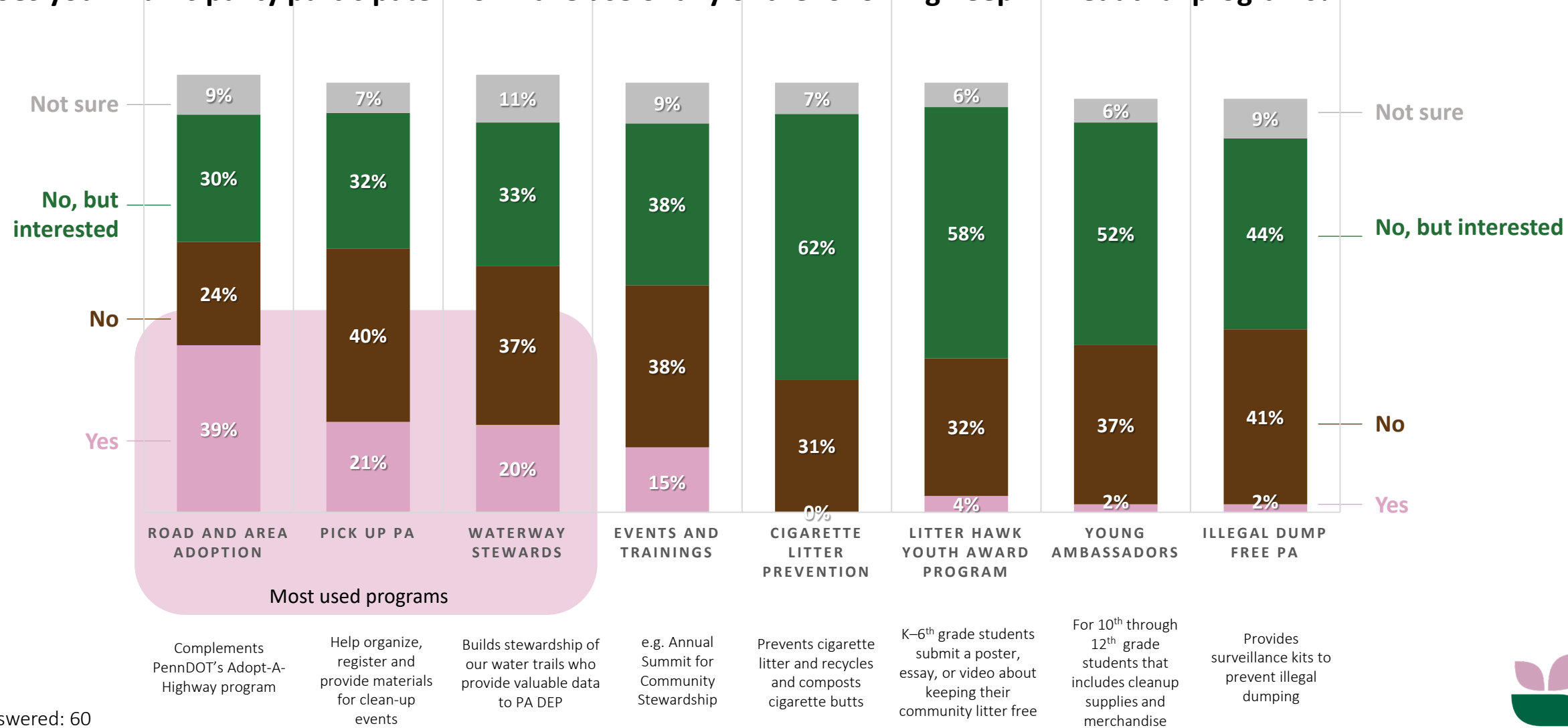
Answered: 61



MUNICIPAL ASSESSMENT - SURVEY RESULTS

Q6

Does your municipality participate in or make use of any of the following Keep PA Beautiful programs?

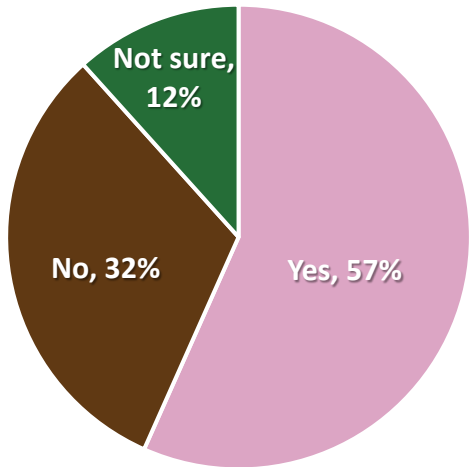


Answered: 60



Q7

Were there any litter clean-up events in your municipality in 2024?



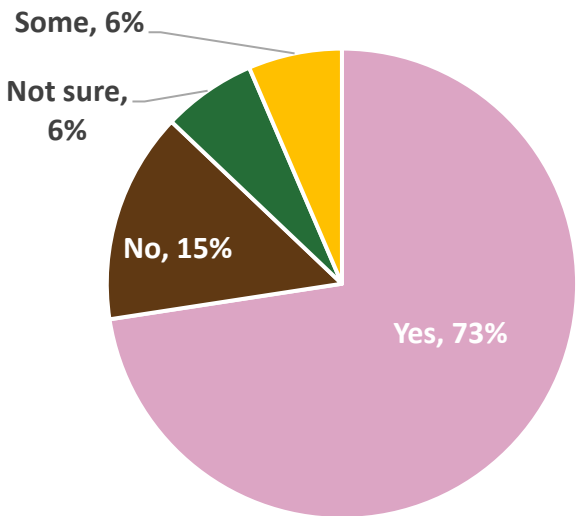
If yes, respondents were asked to indicate if the event was registered with Keep Pennsylvania Beautiful:

- 10 Yes
- 3 No
- 4 Not sure
- 2 Litter Lifters of West Vincent

Answered: 60

Q8

Do the trash and recycling hauler(s) that operate within your municipality supply customers with containers with lids?



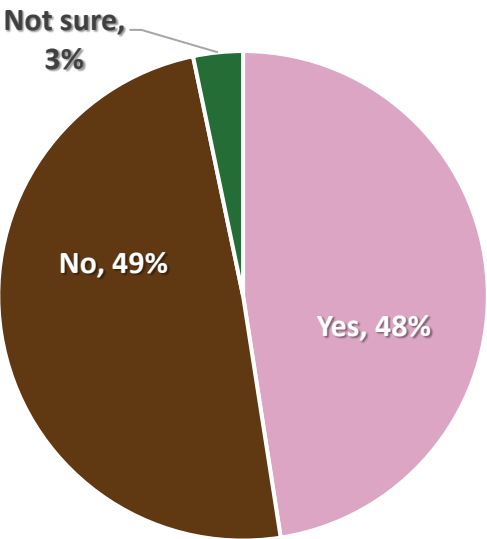
Answered: 62



MUNICIPAL ASSESSMENT - SURVEY RESULTS

Q9

Does your community have special collections for hard to dispose of items, or is there a central public drop off location for these items?



- E-Waste
- Batteries
- Yard waste
- Tires
- Bulk items
- Hazardous waste events
- Paper shredding

Answered: 61

Q10

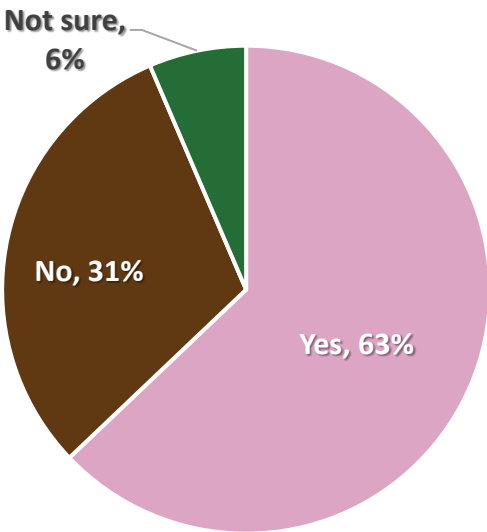
Please describe any existing processes for reporting and/or preventing illegal dumping, graffiti, and littering in your municipality.

- Most stated there is no formal process
- Most rely on the public
 - Call the municipality with complaints
 - Submit a claim through online portal
 - Complaints lead to code/police enforcement
- Many stated education (e.g. newsletters)
- Some have staff monitor and report (e.g. public works, code enforcement)
- Two stated they have cameras in problem areas

Answered: 28

Q11

Does your municipality have an Environment Advisory Committee (EAC) or volunteer group handling beautification and greening initiatives?



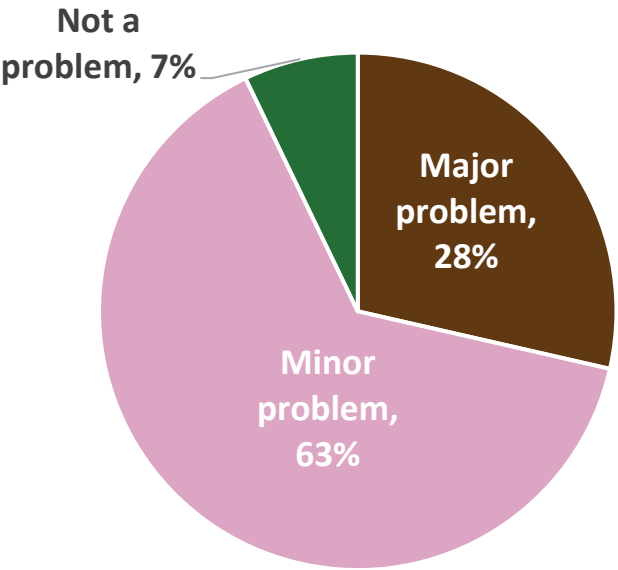
Answered: 62



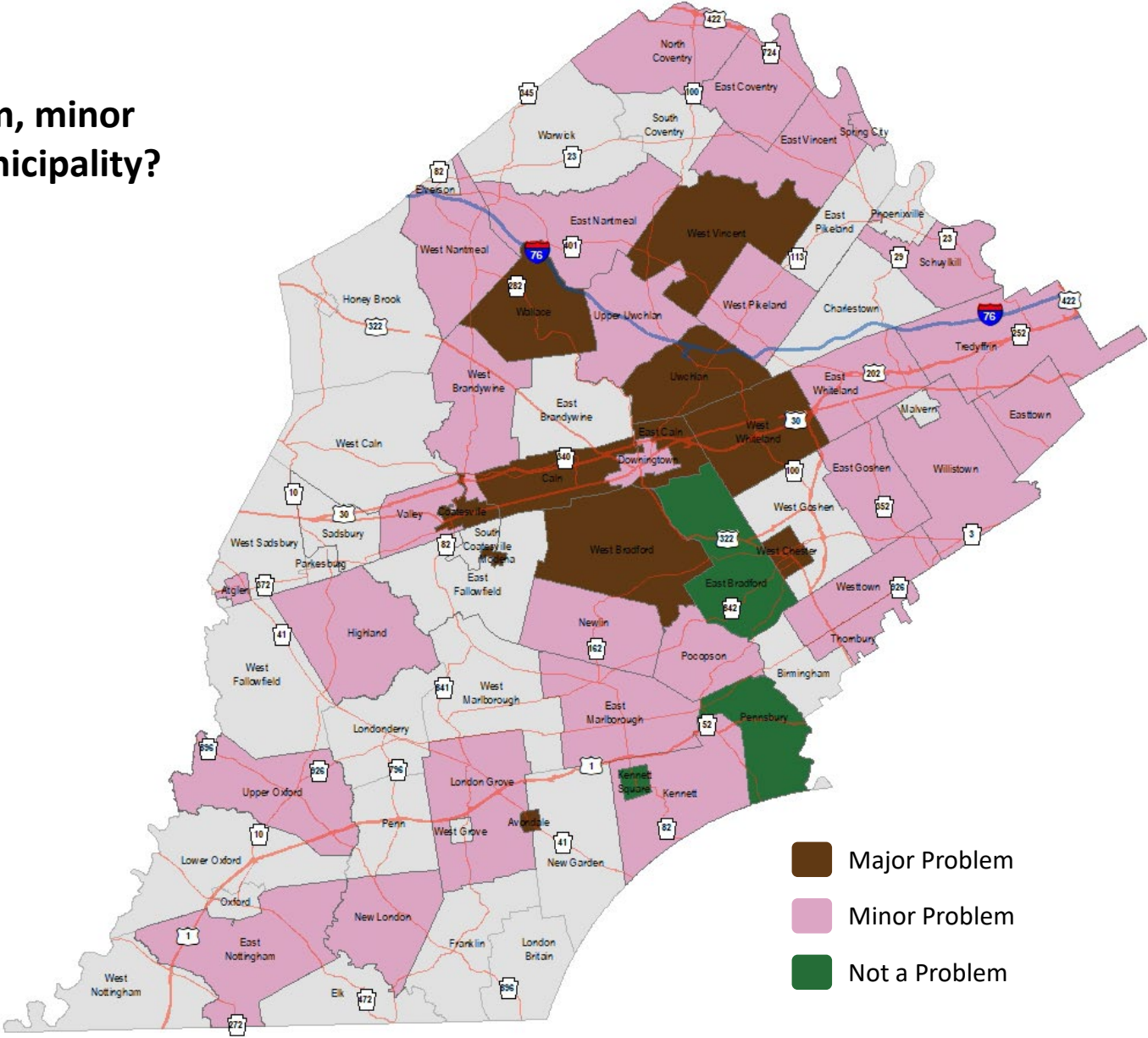
MUNICIPAL ASSESSMENT - SURVEY RESULTS

Q12

Would you say litter is a major problem, minor problem, or not a problem in your municipality?



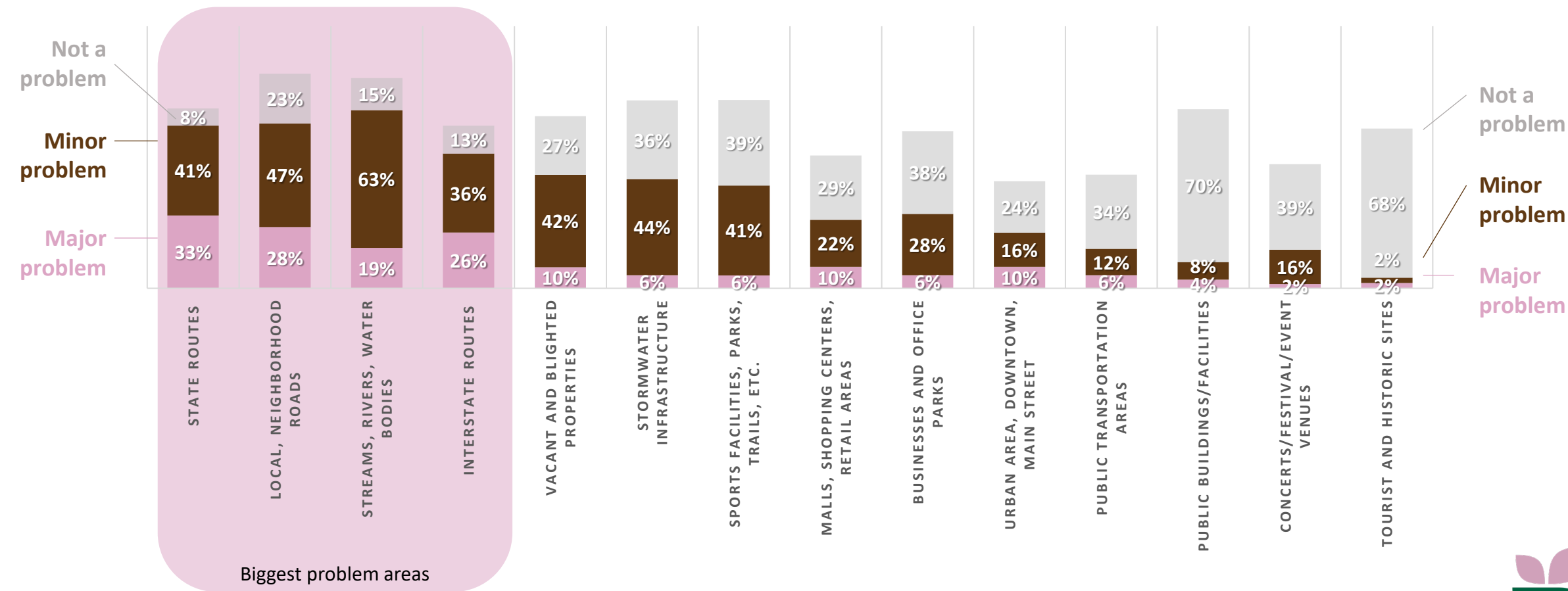
Countywide, most respondents stated that litter is a relatively minor issue in their community. Major problems were in the more central and urbanized areas of the County, specifically along the U.S. Route 30 (bypass and business) and Route 100.



MUNICIPAL ASSESSMENT - SURVEY RESULTS

Q13

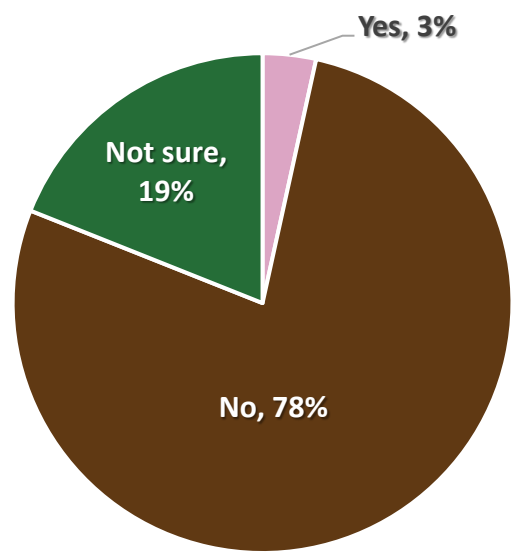
Where do these litter problems occur in your municipality and to what extent is the problem?



MUNICIPAL ASSESSMENT - SURVEY RESULTS

Q14

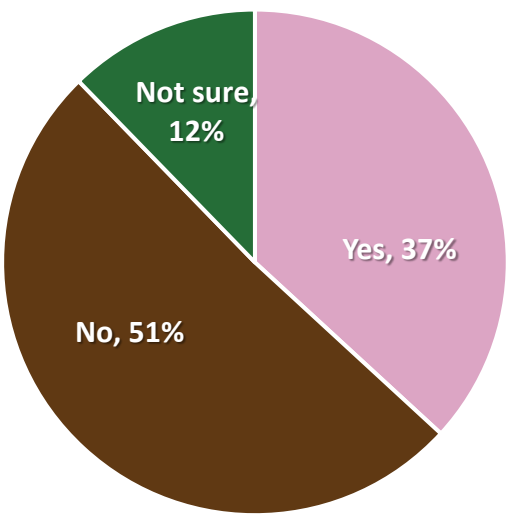
Are you aware of any businesses, schools, religious institutions, or other organizations that do not have proper trash management in place?



Answered: 58

Q15

Is illegal dumping a challenge in your municipality?



Answered: 57



MUNICIPAL ASSESSMENT - SURVEY RESULTS

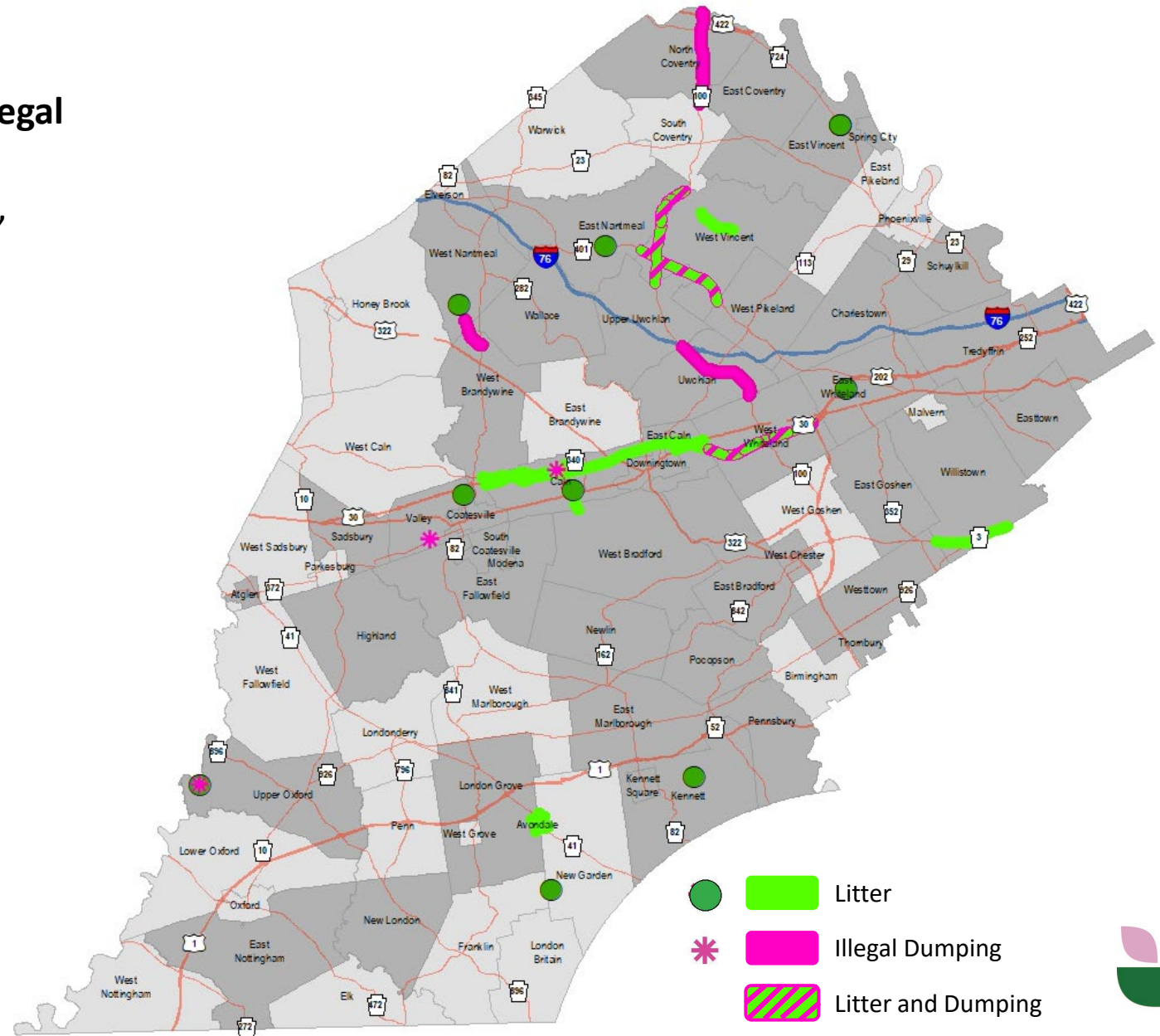
Q13 and Q15

Please let us know of any specific litter and illegal dumping problems in particular areas.

(i.e. road names, nearest intersection, address, landmarks)

Examples of cited areas:

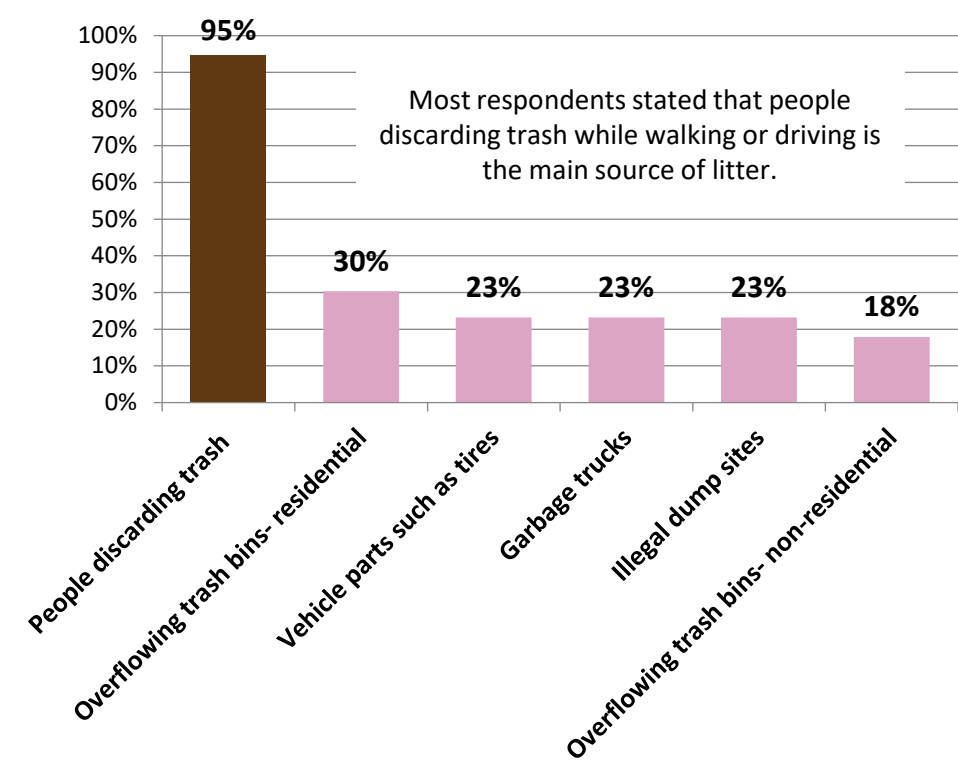
- US Route 30 Bypass
- Business Route 30
- State Routes 3, 41, 100, 401
- White Clay Creek
- Chester Valley Trail access



MUNICIPAL ASSESSMENT - SURVEY RESULTS

Q16

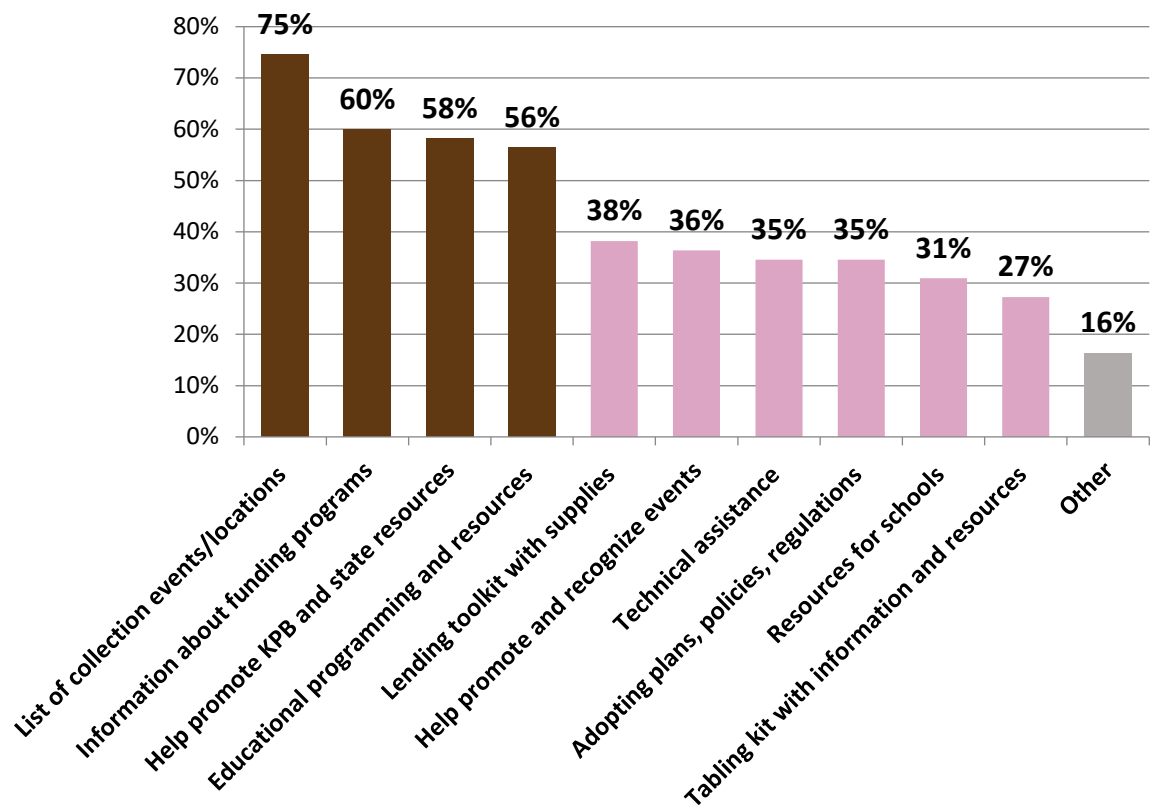
Based on your observation, what are the main sources of litter in your municipality?



Answered: 56

Q17

Would the following resources be beneficial for your municipality, stakeholders, and constituents to address issues related to litter, waste reduction, greening, and stewardship?



Answered: 55



Q18

What do you believe to be the greatest challenges for community beautification?

- **Finding volunteers**
- **Getting people aware and engaged**
- **Educating people**
- **Leadership and accountability**
- Financial Support
- Culture/Habits
- Capacity - Overwhelmed with other issues
- Organizing clean-up events
- Lack of drop-off sites for difficult-to-dispose of items
- Knowing where to start
- Staying motivated
- Lack of support from Penn Dot on state roads
- Safety – of volunteers on heavily traveled roads

Most common
challenges

Answered: 42

Q19

What do you believe to be the greatest opportunities for beautification in your community?

- **Engaging volunteers**
- **Engaging youth/ education to change habits**
- **More clean-up events**
- More enforcement
- Increase participation in programs (e.g. AAH)
- Changing people's habits
- Increase awareness

Most common
opportunities

Answered: 40



Key Findings

- Over half of the respondents have litter policies, but lack a comprehensive approach
- Over half have dedicated clean-up staff, mainly EACs and park boards
- Over half held clean-up events in 2024
- Just under half offer special collections beyond SCCRA events
- Few have formal reporting/prevention systems for dumping/graffiti
- One-quarter perceive litter as a major issue in their municipality, while most view it as a minor issue
- Main problem areas: highways, local roads, waterways, vacant lots, and parks
- Illegal dumping is a common challenge
- Main litter sources: pedestrians and vehicles
- Top programs used: Adopt-a-Highway, Pick Up PA, Waterway Stewards
- There was expressed interest in additional Keep Pennsylvania Beautiful programs:
 - Litter Hawk Youth Award
 - Young Ambassadors
 - Cigarette Litter Prevention
 - Illegal Dump Free PA
- There was expressed interest for additional support for litter, waste reduction, greening, and stewardship:
 - Collection event information
 - Funding program details
 - Educational materials
 - Help promote KPB/state tools
- Challenges: Finding volunteers and Lack of awareness
- Opportunities: Engaging youth, Education, Clean-up events





ADMINISTERED BY
Chester County



About the Program:

Chester County is an affiliate of Keep Pennsylvania Beautiful (KPB).

KPB's vision is empowering Pennsylvanians to keep our communities clean and beautiful. Over the past 30+ years, they have worked with hundreds of thousands of volunteers across the state to pick up nearly 152 million pounds of trash from roadways, waterways, greenways, forests, and other community spaces.

The goal of Keep Chester County Beautiful is to expand capacity within the county for litter abatement, waste reduction, beautification and environmental stewardship.

To learn more about the programs, please visit our website or scan the QR code.

www.chescoplanning.org/Environmental/KCCB/Introduction.cfm



Questions? Contact:
Ryan Mawhinney, AICP
Sustainability Planner
rmawhinney@chesco.org