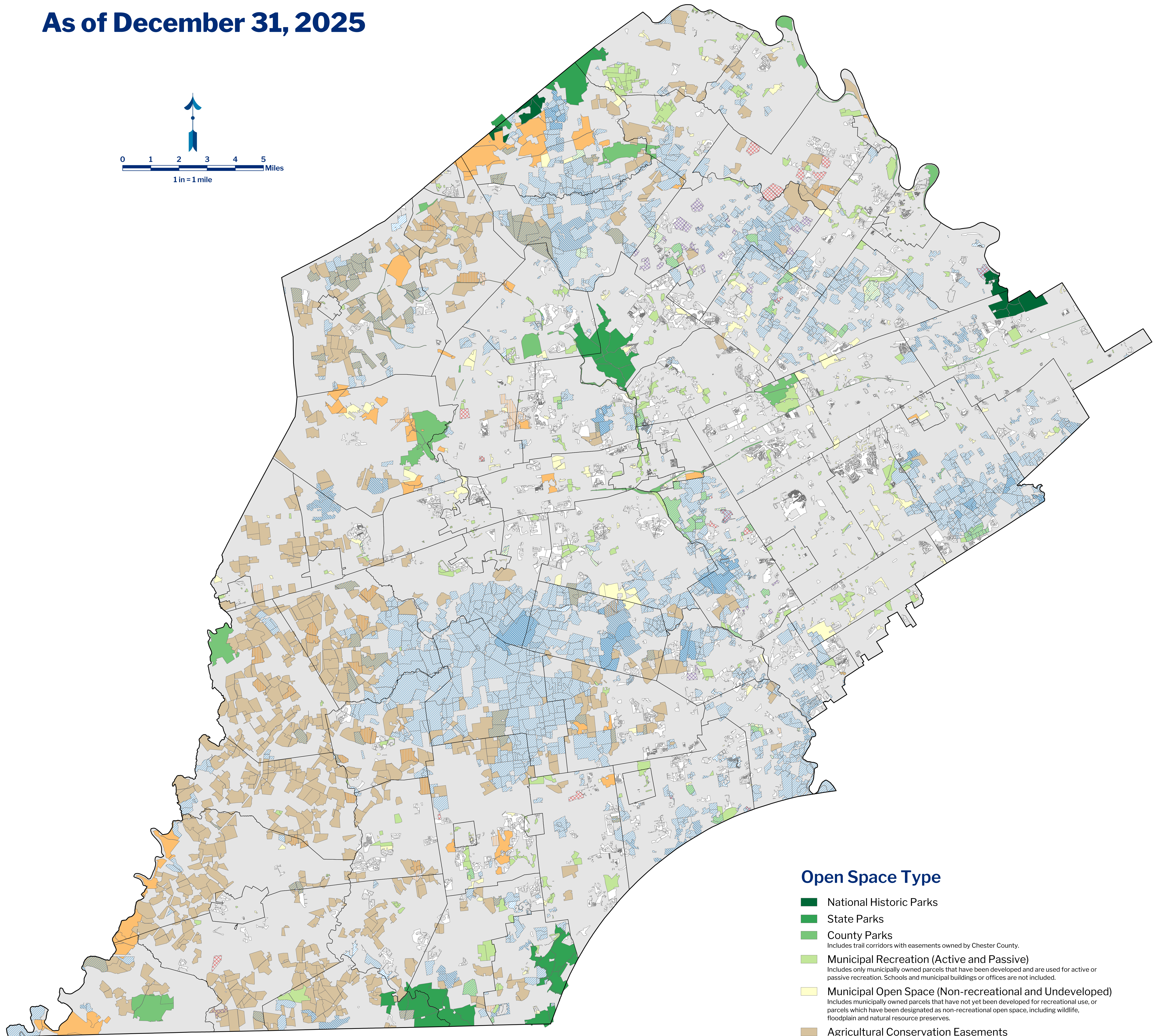
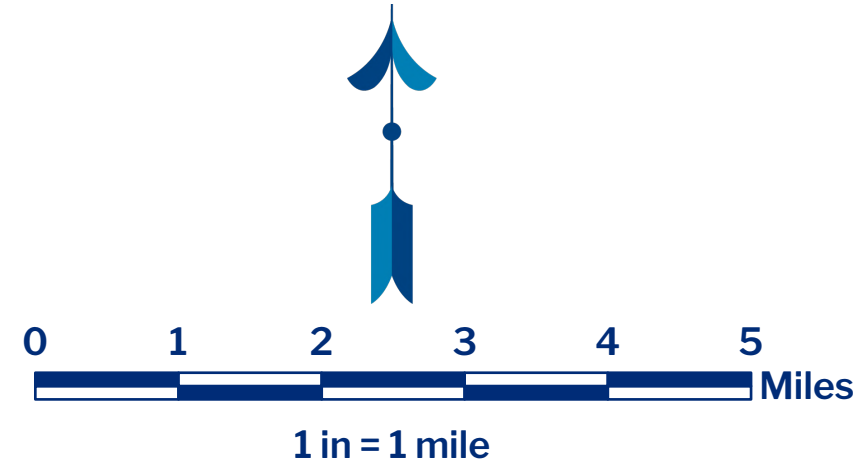


# Chester County Protected Open Space

As of December 31, 2025



## Open Space Type

-  National Historic Parks
-  State Parks
-  County Parks  
Includes trail corridors with easements owned by Chester County.
-  Municipal Recreation (Active and Passive)  
Includes only municipally owned parcels that have been developed and are used for active or passive recreation. Schools and municipal buildings or offices are not included.
-  Municipal Open Space (Non-recreational and Undeveloped)  
Includes municipally owned parcels that have not yet been developed for recreational use, or parcels which have been designated as non-recreational open space, including wildlife, floodplain and natural resource preserves.
-  Agricultural Conservation Easements
-  Homeowner Association Open Space
-  Managed Lands Owned In-fee  
Includes State Game Lands, State Forests and land owned in-fee by the PA Fish and Boat Commission, the Chester Water Authority or the Chester County Water Resources Authority.
-  Managed Lands with Public Sector Easements  
Includes land eased by the Chester County Water Resources Authority and easements that have been funded with County Grants that restrict future development.
-  Parcels with Land Trust Easements
-  Parcels Owned In-fee by Land Trusts
-  Municipal Purchase of Development Rights
-  Municipal Transfer of Development Rights

## Sources

- Lakes, ponds, streams and rivers were provided by Aerial Data Reduction Associated through sublicense to the County of Chester, 1994.
- Parcels owned by homeowner associations, land trusts, water authorities, utilities, and by the United States of America, the Commonwealth of Pennsylvania and Chester County were provided by the Chester County Tax Assessors Office and the Bureau of Land Records E-PIN system, 2025.
- Parcels with agricultural conservation easements were provided by the Chester County Agricultural Land Preservation Board, 2025.
- Parcels with Water Resources Authority easements were provided by the Chester County Water Resources Authority, 2025.
- Parcels with land trust easements were provided by the Brandywine Conservancy, the Brandywine Valley Association, the French and Pickering Conservation Trust, the Land Conservancy of Southern Chester County, the Nature Conservancy, Natural Lands, the Open Land Conservancy of Chester County, the Pennsbury Land Trust, and the Willistown Conservation Trust, through a license agreement with Chester County, 2025.

## Notes

1. The Chester County Planning Commission defines Protected Open Space as: "Land and water areas that have little or no development; are used for recreation or preserving cultural or natural resources, including productive agricultural soils; and are protected either permanently or on a long term basis."
2. The information presented is based on data received from various contributing sources. Polygons that contain easements may only contain partial easements. Therefore, the area of a polygon presented may be larger than the actual area of the land that is eased.
3. Chester County is not permitted to distribute to any private or public entity, electronic data or mapping depicting parcels presented on this map that contain land trust easements, except as set forth in the licensing agreements between the land holding land trusts and the County of Chester.
4. Disclaimer: This map was digitally compiled for internal maintenance and developmental use by the County of Chester, Pennsylvania to provide an index to parcels and for other reference purposes. Parcel lines do not represent actual field surveys of premises. County of Chester, Pennsylvania makes no claims as to the completeness, accuracy or content of any data contained herein, and makes no representation of any kind, including, but not limited to, the warranties of merchantability or fitness for a particular use, nor are any such warranties to be implied or inferred, with respect to the information or data furnished herein.