

# Open Space Action Plan

Your Township

CHESTER COUNTY, PA

Date

PLAN  
TEMPLATE



*Open Space*  
**ACCELERATOR**  
CHESTER COUNTY PLANNING COMMISSION

DRAFT 04/30/26

# Acknowledgements

Funding support for this plan provided by:  
xxxxxxxxxxxxxxxxxx

Steering committee:

- John Smith
- Jane Doe
- John Smith
- Jane Doe
- John Smith
- Jane Doe



# Contents

- 4** Executive Summary
- 4** How to Use this Plan
- 5** Open Space Assessment
  - 5** Documents Reviewed
  - 6** Existing Plan Goals & Objectives
  - 7** Plan Implementation Status
  - 8** Staff & Volunteer Capacity
  - 8** Open Space Summary
- 9** Community Outreach
- 12** **IMPLEMENTATION PROJECT- EXAMPLE 1:**  
Land Preservation Plan
- 16** **IMPLEMENTATION PROJECT- EXAMPLE 2:**  
New Parkland Identification Study
- 20** **IMPLEMENTATION PROJECT- EXAMPLE 3:**  
Trail Connection Feasibility Study



# Executive Summary

This plan is meant to help this municipality advance our open space goals by implementing projects identified by our community.

Lorem ipsum dolor sit amet, consectetur adipiscing elit. Curabitur fringilla justo nec eros blandit posuere. Cras a convallis felis, at molestie velit. Lorem ipsum dolor sit amet, consectetur adipiscing elit. Curabitur fringilla justo nec eros blandit posuere. Cras a convallis felis, at molestie velit.

Lorem ipsum dolor sit amet, consectetur adipiscing elit. Curabitur fringilla justo nec eros blandit posuere. Cras a convallis felis, at molestie velit. Lorem ipsum dolor sit amet, consectetur adipiscing elit. Curabitur fringilla justo nec eros blandit posuere. Cras a convallis felis, at molestie velit.

Lorem ipsum dolor sit amet, consectetur adipiscing elit. Curabitur fringilla justo nec eros blandit posuere. Cras a convallis felis, at molestie velit.

# How to Use this Plan

This is a short-term action plan that is meant to be implemented within the next two years. The Chester County Planning Commission will support the municipality with technical assistance and implementation guidance after the plan is complete.

Lorem ipsum dolor sit amet, consectetur adipiscing elit. Curabitur fringilla justo nec eros blandit posuere. Lorem ipsum dolor sit amet, consectetur adipiscing elit. Curabitur fringilla justo nec eros blandit posuere.

Municipal staff, elected officials, and committee members all have a role to play in implementing the plan:

- Municipal staff
- Elected officials:
- Open space/parks and recreation/environmental advisory committees





# OPEN SPACE ASSESSMENT

This assessment catalogs the open space-related recommendations from previous plans, as well as several key parts of the municipality's ordinance that relate to open space and the environment.

## Documents Reviewed

- 1** Comprehensive plan (2019)
- 2** OSRER (2021)
- 3** Lorem ipsum
- 4** Lorem ipsum
- 5** Zoning ordinance
  - Open space design option
  - Natural resouces
  - Lorem ipsum
  - Lorem ipsum

# OPEN SPACE GOAL

established through other plans



*Advance the township's significant legacy of open space protection through the continued preservation of agricultural lands and unprotected open space.*

## OPEN SPACE OBJECTIVES

established through other plans

- 1** Encourage the preservation of agricultural lands within the Township.
- 2** Encourage the preservation of unprotected open space within the Township.
- 3** Highlight the ongoing success of open space and land preservation efforts within the community.
- 4** Lorem ipsum dolor sit amet, consectetur adipiscing elit. Curabitur fringilla ec eros posuere. Cras a felis, at molestie velit. Donec sed maxi.
- 5** Lorem ipsum dolor sit amet, consectetur adipiscing elit. Curabitur fringilla ec eros posuere. Cras a felis, at molestie velit. Donec sed maxi.
- 6** Lorem ipsum dolor sit amet, consectetur adipiscing elit. Curabitur fringilla ec eros posuere. Cras a felis, at molestie velit. Donec sed maxi.

# Implementation Status

## identified in previous plans

The existing plans set forth the following recommendation action items. Lorem ipsum dolor sit amet, consectetur adipiscing elit. Curabitur fringilla justo nec eros blandit posuere. Cras a convallis felis, at molestie velit.

- 1** Complete Lorem ipsum dolor sit amet, consectetur adipiscing elit. Curabitur fringilla posuere. Cras a convallis felis
- 2** Complete Lorem ipsum dolor sit amet, consectetur adipiscing elit. Curabitur fringilla justo nec eros blandit posuere. Cras a convallis felis, at molestie velit.
- 3** In progress Lorem ipsum dolor sit amet, consectetur adipiscing elit. Curabitur fringilla posuere. Cras a convallis felis
- 4** Not started Lorem ipsum dolor sit amet, consectetur adipiscing elit. Curabitur fringilla justo nec eros blandit posuere. Cras a convallis felis, at molestie velit.
- 5** Complete Lorem ipsum dolor sit amet,
- 6** Complete Lorem ipsum dolor sit amet, consectetur adipiscing elit. Curabitur fringilla posuere. Cras a convallis felis
- 7** In progress Lorem ipsum dolor sit amet, consectetur adipiscing elit. Curabitur fringilla posuere. Cras a convallis felis
- 8** Not started Lorem ipsum dolor sit amet,
- 9** Complete Lorem ipsum dolor sit amet, consectetur adipiscing elit. Curabitur fringilla posuere. Cras a convallis felis
- 10** Complete Lorem ipsum dolor sit amet, consectetur adipiscing elit. Curabitur fringilla justo nec eros blandit posuere. Cras a convallis felis, at molestie velit.
- 11** In progress Lorem ipsum dolor sit amet, consectetur adipiscing elit. Curabitur fringilla posuere. Cras a convallis felis

Significant progress has been made implementing priority projects from previous plans, though trails identified in the trail plan have not been implemented.

Lorem ipsum dolor sit amet, consectetur adipiscing elit. Curabitur fringilla justo nec eros blandit posuere. Cras a convallis felis, at molestie velit.

## Staff & Volunteer Capacity

Currently the municipal manager applies for grants related to open space funding, and elected officials serve as the municipality's Open Space Board.

Lorem ipsum dolor sit amet, consectetur adipiscing elit. Curabitur fringilla justo nec eros blandit posuere. Cras a convallis felis, at molestie velit. Lorem ipsum dolor sit amet, consectetur adipiscing elit. Curabitur fringilla justo nec eros blandit posuere. Cras a convallis felis, at molestie velit. Donec sed maximus risus. Vivamus pellentesqu

Lorem ipsum dolor sit amet, consectetur adipiscing elit. Curabitur fringill. Cras a convallis felis, at molestie velit.

## Open Space Assessment Summary

Through this process, several themes rose to the top....

### **Theme 1**

Preservation opportunities exist, but more proactiveness is needed. Donec sed maximus risus. Vivamus pellentesque purus non erat varius Cras a convallis felis, at molestie velit. Donec

### **Theme 2**

Ag lands are being developed, need to do outreach to families. Donec sed maximus risus. Vivamus pellentesque purus non erat varius Cras a convallis felis, at molestie velit. Donec

### **Theme 3**

Lorem ipsum dolor sit amet, consectetur adipiscing elit. Curabitur posuere. Donec sed maximus risus. Vivamus pellentesque purus non erat varius Cras a convallis felis, at molestie velit. Donec



# COMMUNITY OUTREACH

## Steering Committee

This planning process involved three meetings with the project steering committee. Their priorities included....

- Lorem ipsum dolor sit amet, consectetur adipiscing elit. Curabitur fringill. Cras a convallis felis, at molestie velit. .
- Lorem ipsum dolor sit amet, consectetur adipiscing elit. Curabitur fringilla justo nec eros blandit posuere. Cras a convallis felis, at molestie velit. Donec sed maximus risus.
- Lorem ipsum dolor sit amet, consectetur adipiscing elit. Curabitur fringill. Cras a convallis felis, at molestie velit.



## Community Event

The municipality held a “Love Your Park” day event on 9/16, which was attended by over 200 residents. The Steering Committee hosted a table soliciting feedback on this project...

- Lorem ipsum dolor sit amet, consectetur adipiscing elit. Curabitur fringilla justo nec eros posuere. .
- Lorem ipsum dolor sit amet, consectetur adipiscing elit. Curabitur fringilla justo nec eros posuere.
- Lorem ipsum dolor sit amet, consectetur adipiscing elit. Curabitur fringilla justo nec eros posuere.
- Lorem ipsum dolor sit amet, consectetur adipiscing elit. Curabitur fringilla justo nec eros posuere.

# Land Preservation Plan

EXAMPLE

## Overview

What this plan is, how it should be used, rules and responsibilities.

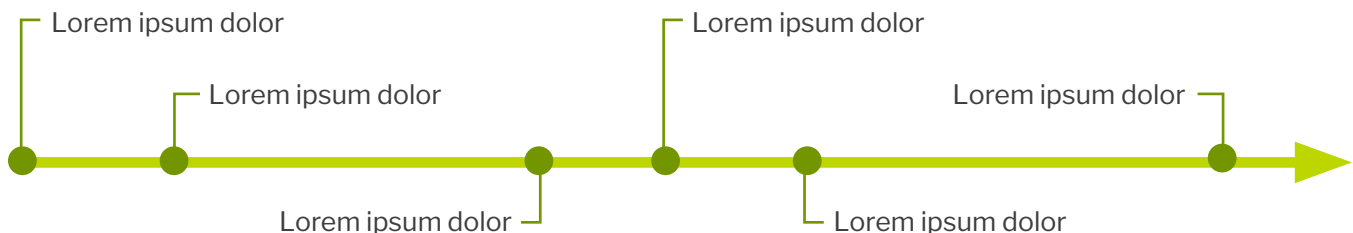
Lorem ipsum dolor sit amet, consectetur adipiscing elit. Curabitur fringilla justo nec eros blandit posuere. Cras a convallis felis, at molestie velit. Donec nisl hendrerit. Nullam vitae mauris vitae magna mollis aliquam quis eget est. Pellentesque eu sem justo. Nulla feugiat ligula nec gravida tristique. Sed a maximus eros.

## Implementation and actions

The following steps describe how different entities can help implement this plan.

Action	Description	Who is responsible
Action 1	xx	xx
Action 2	xx	xx
Action 3	xx	xx

## Timeline for implementation



## Criteria

A series of criteria were established by the municipality by which parcels under consideration for preservation can be ranked. The criteria are as follows:

- 1 Size
- 2 Existing Natural Resources
- 3 Within the Pigeon Creek Watershed
- 4 Prime agricultural soils
- 5 Proximity to existing preserved open space
- 6 Adjacency to existing parkland or trails

## Goals and targets

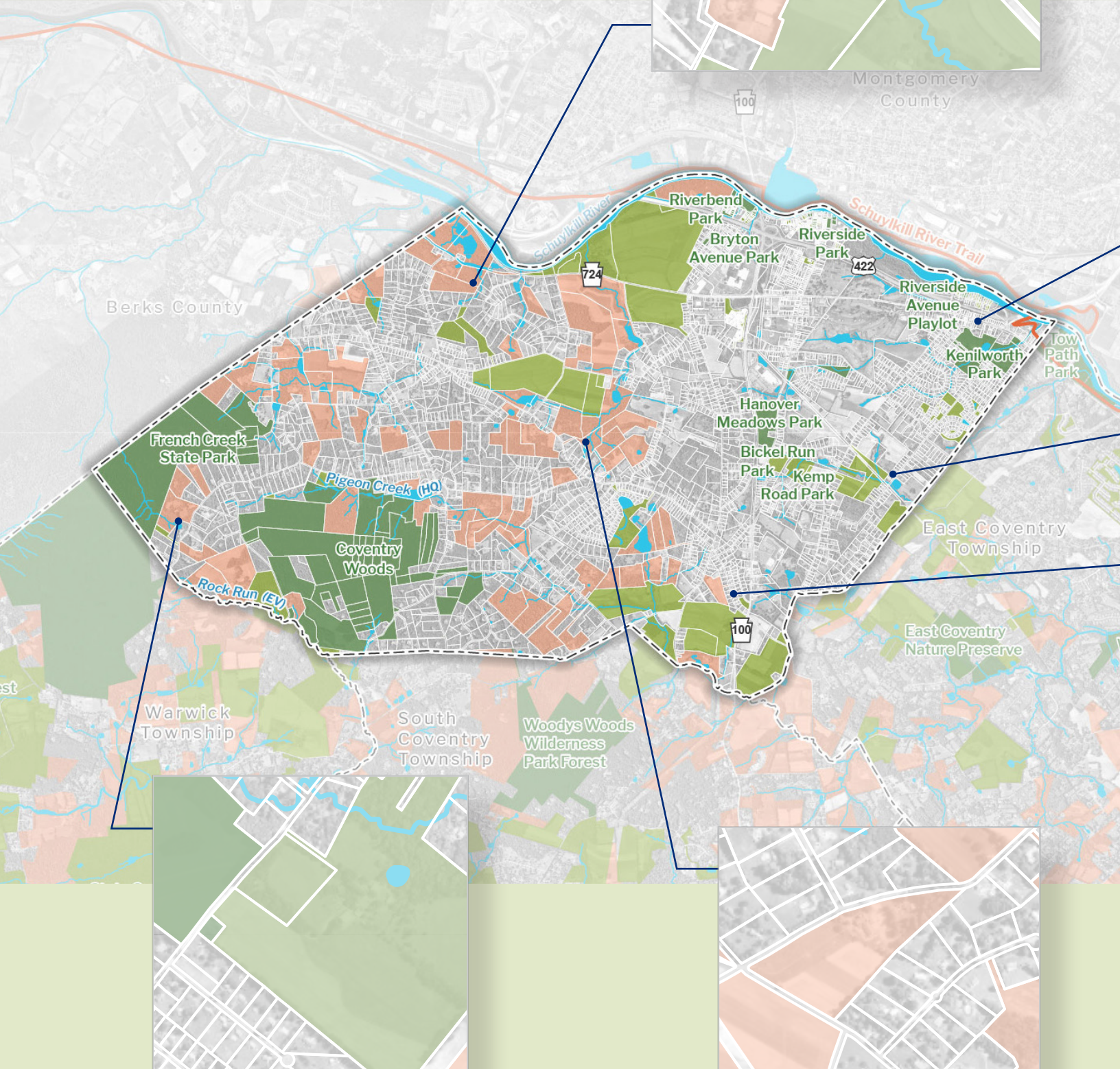
By 2050, the municipality will have protected 500 more acres than are preserved today.

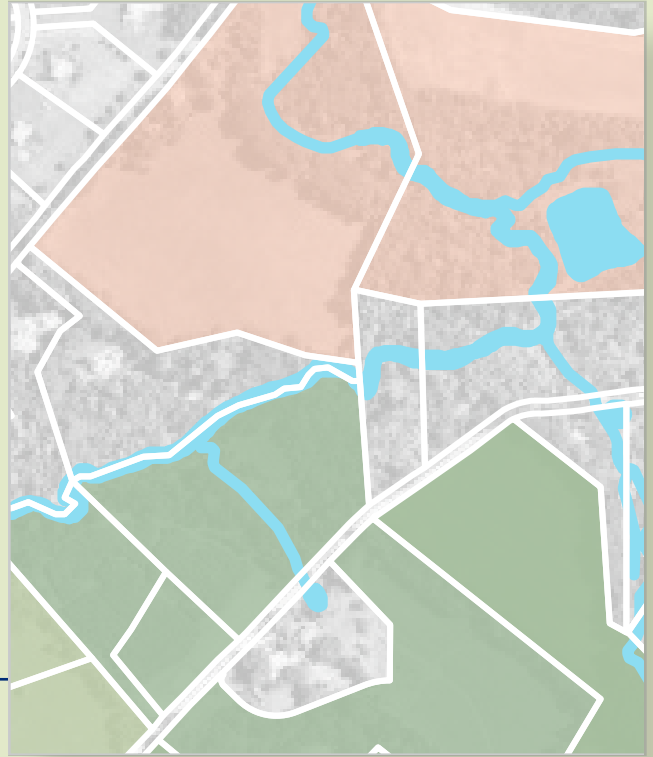
Lorem ipsum dolor sit amet, consectetur adipiscing elit. Curabitur fringilla justo nec eros blandit posuere. Cras a convallis felis, at molestie velit. Donec sed maximus risus. Vivamus pellentesque purus non erat varius, et euismod nisl hendrerit. Nullam vitae mauris vitae magna.

## Funding

Funding Program	Agency	Maximum Amount	Match	Funding Cycle/ Dates
Program 1	xx	xx	xx	xx
Program 2	xx	xx	xx	xx
Program 3	xx	xx	xx	xx
Program 4	xx	xx	xx	xx
Program 5	xx	xx	xx	xx

# North Coventry Township Open space map





# New Parkland Identification Study

EXAMPLE


## Overview and goals

The municipality is interested in adding parkland so residents south of Route 1 have more convenient and walkable access to a park. xxxxxxxxxxxx

- 1 Lorem ipsum dolor sit amet, consectetur adipiscing elit.
- 2 Lorem ipsum dolor sit amet, consectetur adipiscing elit.

## Parkland analysis

Park name	Acerage	Class	Amenities
Lorem ipsum	xx	xx	Lorem ipsum dolor sit amet, consectetur adipiscing
Lorem ipsum	xx	xx	Lorem ipsum dolor sit amet, consectetur adipiscing
Lorem ipsum	xx	xx	Lorem ipsum dolor sit amet, consectetur adipiscing
Lorem ipsum	xx	xx	Lorem ipsum dolor sit amet, consectetur adipiscing
Lorem ipsum	xx	xx	Lorem ipsum dolor sit amet, consectetur adipiscing

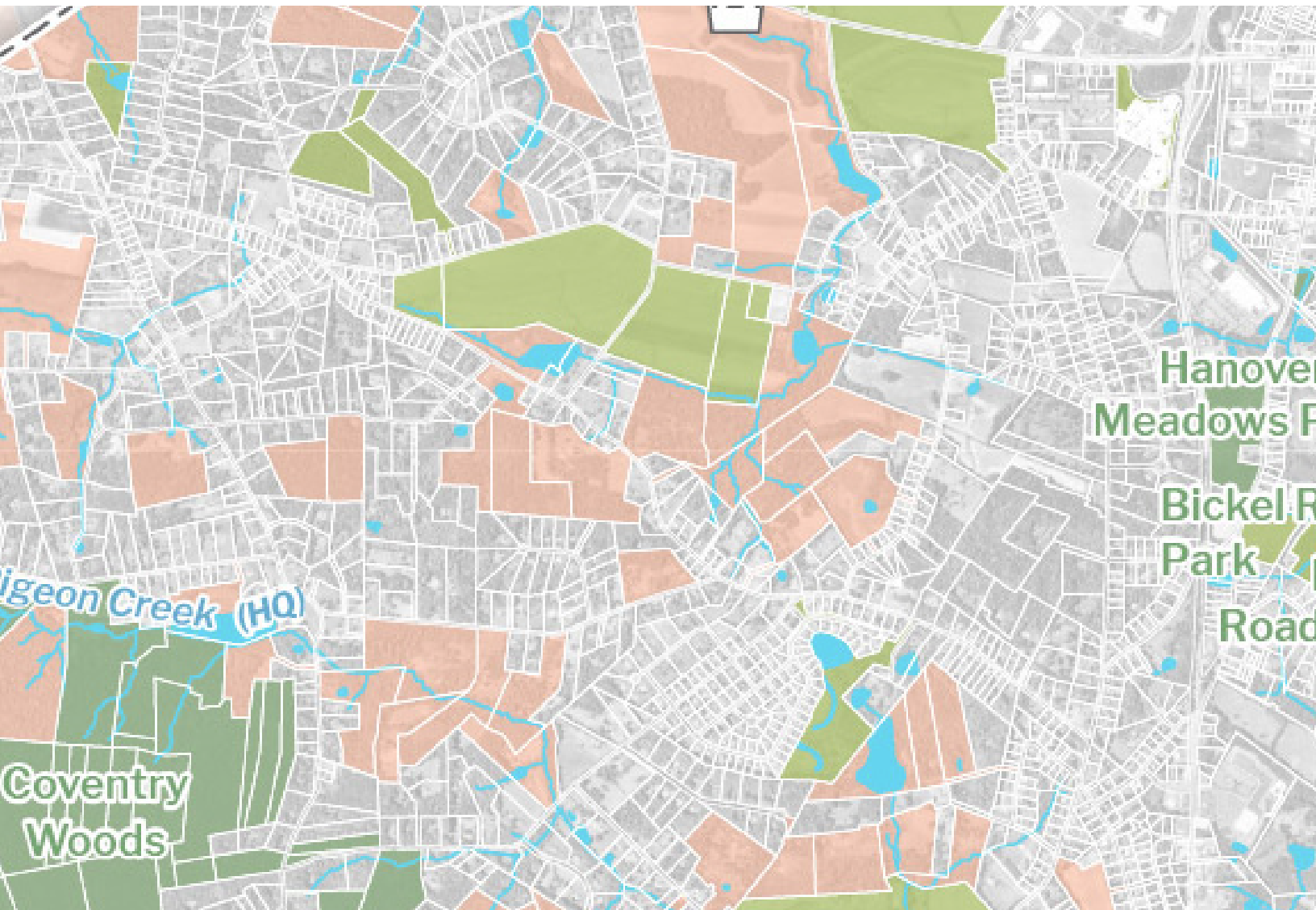

 xx Total acreage  
 xx Recommended acreage

## Other nearby facilities

Name	Acerage	Type
Lorem ipsum	8 acres	Pocket park
Lorem ipsum	55 acres	Community park
Lorem ipsum	xx acres	Lorem ipsum

## Criteria

- |                        |                           |
|------------------------|---------------------------|
| <b>1</b> Over 50 acres | <b>3</b> South of Route 1 |
| <b>2</b> Walkable      | <b>4</b> Lorem ipsum      |

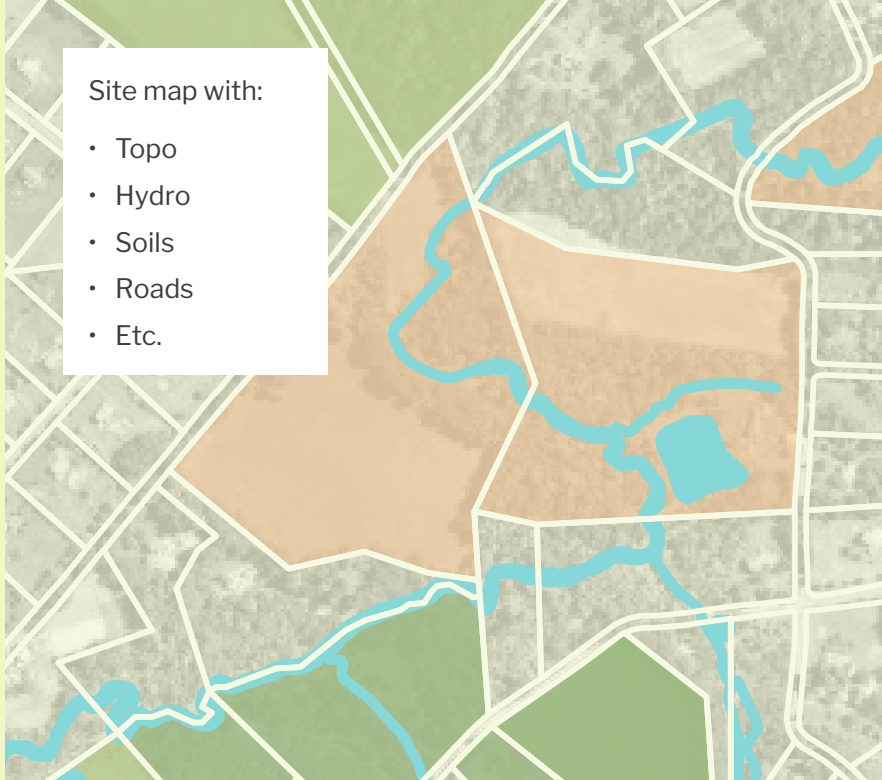


## Summary

Residents of the municipality are lacking access to active recreation facilities with sports fields, so the municipality should be looking for....

Lorem ipsum dolor sit amet, consectetur adipiscing elit. Curabitur fringilla justo nec eros blandit posuere. us non erat varius, et euismod nisl hendrerit. Nullam vitae mauris vitae magna mollis aliquam quis eget est.

# Potential properties



## Property 1

- How property addresses criteria
- Next steps
- Lorem ipsum
- Lorem ipsum dolor sit
- Lorem ipsum



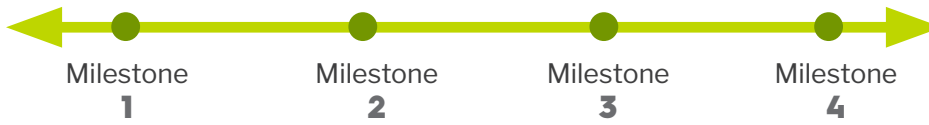
## Property 2

- How property addresses criteria
- Next steps
- Lorem ipsum
- Lorem ipsum dolor sit
- Lorem ipsum

## Next steps

- 1** Reach out to parcel owners.
- 2** Consider updating official map to include these parcels.
- 3** Apply for grants
- 4** Lorem ipsum dolor sit amet, consectetur

## Timeline



## Funding

Program	Funder	Amount	Deadline	Match
Program 1	xx	xx	xx	xx
Program 2	xx	xx	xx	xx
Program 3	xx	xx	xx	xx
Program 4	xx	xx	xx	xx
Program 5	xx	xx	xx	xx

# Trail Connection Feasibility Study

EXAMPLE

## Purpose

The municipla comp plan identifies a desire to connect the township park with the Schuylkill River Trail

Lorem ipsum dolor sit amet, consectetur adipiscing elit. Curabitur fringilla justo nec eros

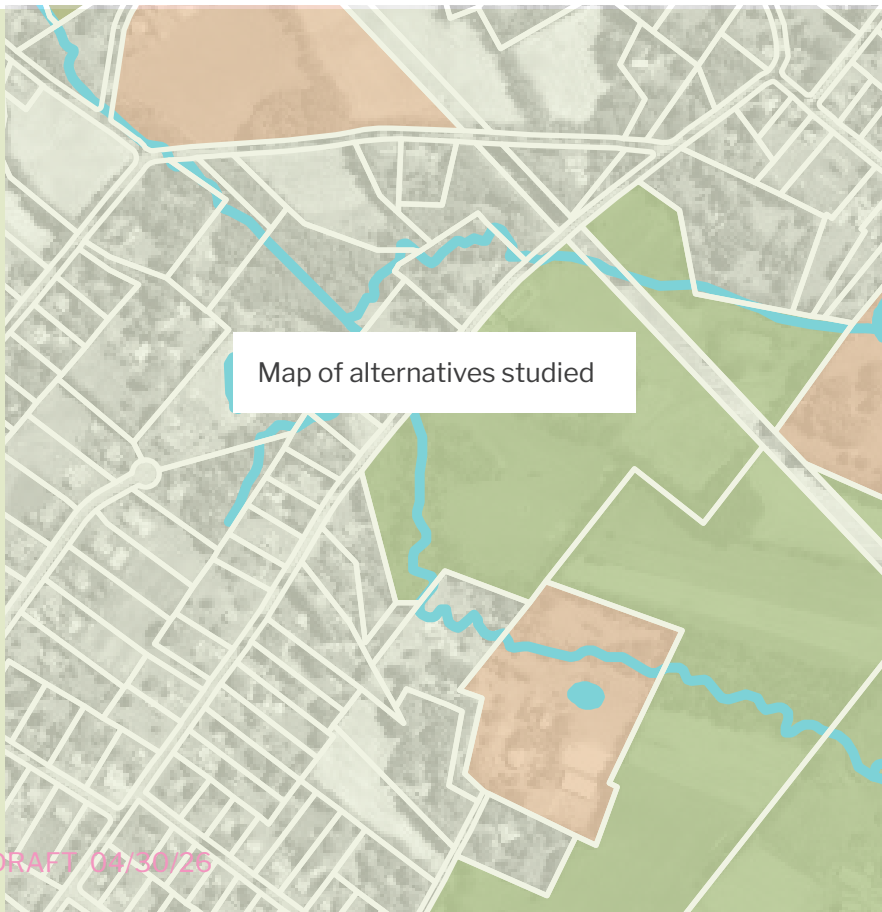
## Site analysis and alternatives study

### Site opportunities

- Lorem ipsum dolor sit amet elit
- Lorem ipsum dolor sit
- Lorem ipsum dolor sit amet elit
- Lorem ipsum dolor sit

### Site constraints

- Lorem ipsum dolor sit
- Lorem ipsum dolor sit amet
- Lorem ipsum dolor sit



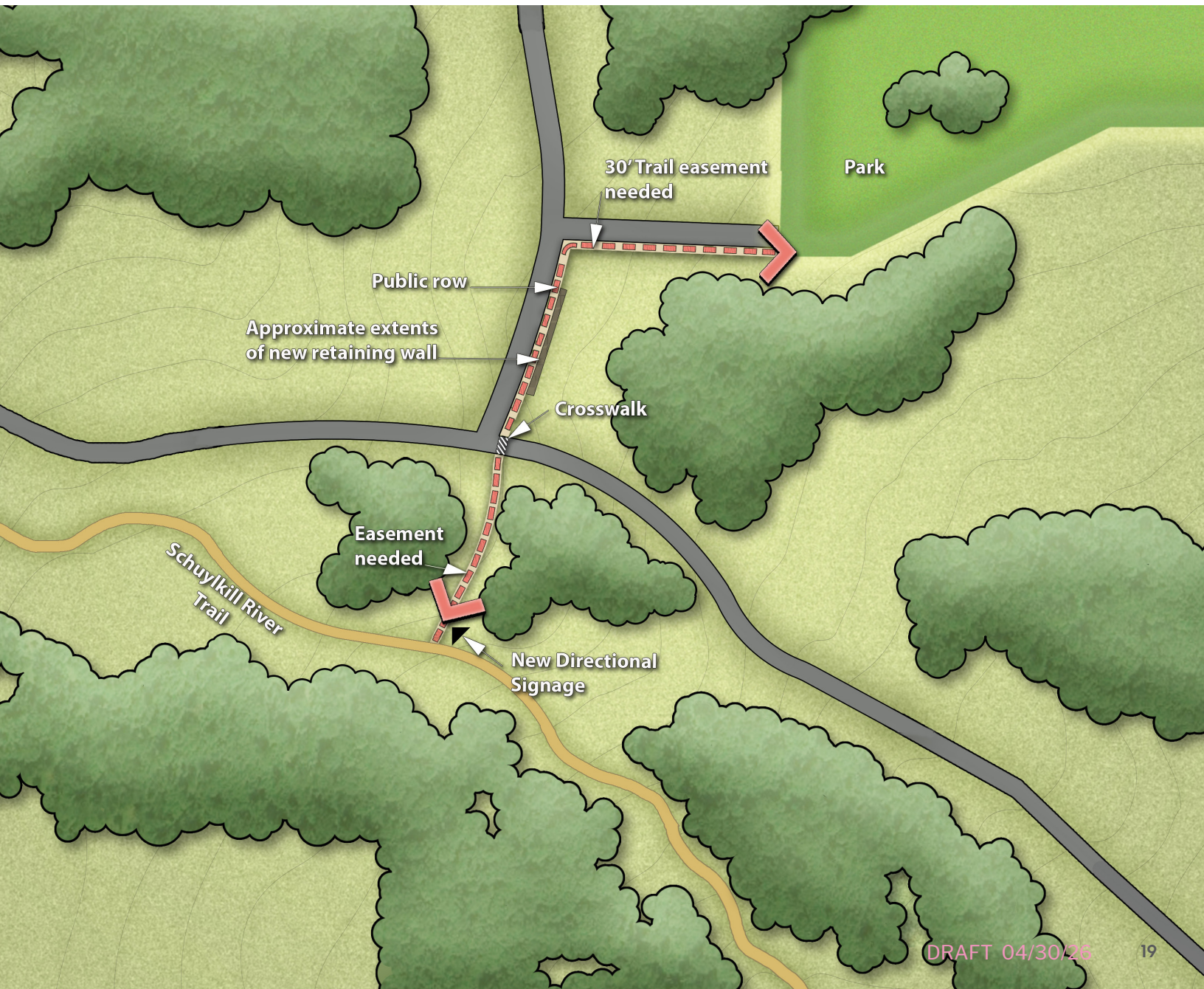
## The most feasible alternative

The team reviewed several alternatives. Due to level terrain, scenic views, and ample right-of-way, the most feasible alternative was .....

## Proposed trail connection

Lorem ipsum dolor sit amet, consectetur adipiscing elit. Curabitur fringilla justo nec eros blandit posuere. Cras a convallis felis, at molestie velit. Donec sed maximus risus. Vivamus pellentemus eros.

- 1,020 Linear feet
- 5 Parcels impacted
- Township
- School district
- Private
- Private
- Private
- \$750,000 Estimated total cost



## Statement of probable construction costs

\$ xx	Design and engineering
<b>Right-of-way</b>	
\$ xx	Easement acquisition associated costs
<b>Construction</b>	
\$ xx	Grading
\$ xx	Stormwater, E & S
\$ xx	Paving
\$ xx	Retaining wall
\$ xx	Intersection improvements
\$ xx	Signage
\$ xx	Permits
\$ xx	Inspection
\$ xx	Total
\$ xx	Contingency (10%)
\$ xx	<b>Grand total</b>

## Funding

Funding Program	Agency	Maximum Amount	Match	Funding Cycle/ Dates
Program 1	xx	xx	xx	xx
Program 2	xx	xx	xx	xx
Program 3	xx	xx	xx	xx
Program 4	xx	xx	xx	xx
Program 5	xx	xx	xx	xx

# Implementation

Task	Implementer	Timeline
Lorem ipsum dolor sit amet, consectetur adipiscing	xx	xx
Lorem ipsum dolor sit amet, consectetur adipiscing elit. fringilla justo nec eros blandit posuere.	xx	xx
Lorem ipsum	xx	xx
Lorem ipsum dolor sit amet, consectetur adipiscing	xx	xx
Lorem ipsum dolor sit amet, consectetur adipiscing elit. fringilla justo nec eros blandit posuere.	xx	xx
Lorem ipsum	xx	xx
Lorem ipsum dolor sit amet, consectetur adipiscing	xx	xx
Lorem ipsum dolor sit amet, consectetur adipiscing elit. fringilla justo nec eros blandit posuere.	xx	xx
Lorem ipsum	xx	xx
Lorem ipsum dolor sit amet, consectetur adipiscing	xx	xx
Lorem ipsum dolor sit amet, consectetur adipiscing elit. fringilla justo nec eros blandit posuere.	xx	xx

## Summary

Residents of the municipality are lacking access to active recreation facilities with sports fields, so the municipality should be looking for...

Lorem ipsum dolor sit amet, consectetur adipiscing elit. Curabitur fringilla justo nec eros blandit posuere. us non erat variu eros blandit posuere. Cras a convallis felis, at eros blandit posuere. Cras a convallis felis, at s, et euismod nisl hendrerit. Nullam vitae mauris vitae magna mollis aliq molestie velit. Donec uam quis eget est.



# Open Space Action Plan

**Your Township**

CHESTER COUNTY, PA

Date

Prepared by  
Chester County Planning Commission

*Open Space*  
**ACCELERATOR**  
CHESTER COUNTY PLANNING COMMISSION